

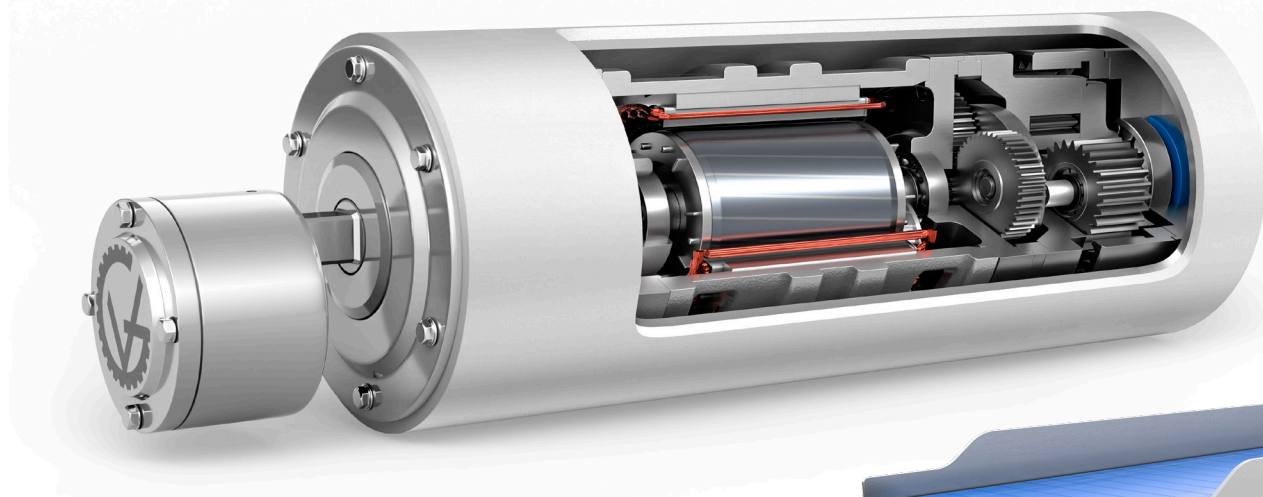
# SSV Series Drum Motors



SSV Drum Motors are manufactured for hygienic belt conveyor applications where sanitation and food safety are paramount, in industries such as dairy, meat and poultry processing, baking and pharmaceutical. Constructed of 316-stainless steel, SSV Drum Motors are USDA-approved and feature an IP69K sealing system that withstands washdown pressure up to 3,000 psi.

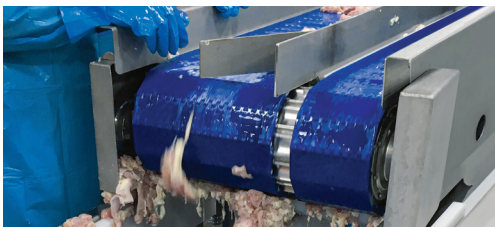
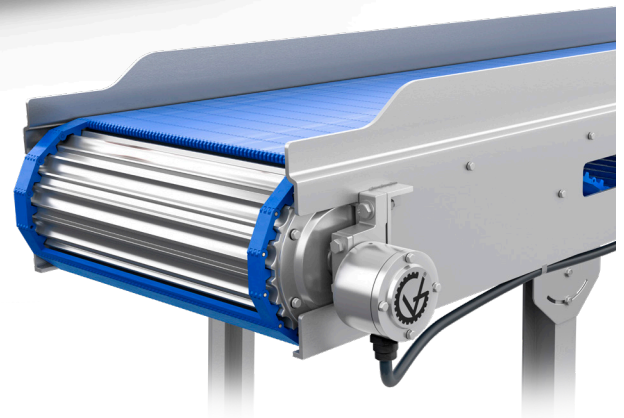
All drive components, including the motor, gear reducer, and bearings, are enclosed and protected inside the drum and designed for 80,000 hours of continuous operation before maintenance, increasing efficiency and safety while decreasing maintenance and operating costs. With the motor coupled in-line to the gear reducer, the drum motor operates at 96% mechanical efficiency, reducing energy consumption.

For modular, wire mesh, and monolithic thermoplastic conveyor belts, the SSV Drum Motor has the belt profile machined directly onto the drive drum, and the SSV-XP Drum Motor has the belt profile machined directly onto an exchangeable sleeve to drive the belt without the use of sprockets. The square shaft and sprockets used with traditional external conveyor drives have gaps and crevices where byproducts accumulate, become trapped, and harbor bacteria. SSV Series Drum Motors eliminate byproduct build-up areas, increasing hygiene and reducing water and time used for washdown by 50%.



- **INCREASE SAFETY & HYGIENE**
- **ELIMINATE DRIVE SPROCKETS**
- **REDUCE WATER & TIME FOR WASHDOWN**

View  
Video



1-888-326-1476 | [info@vandergraaf.com](mailto:info@vandergraaf.com) | [www.vandergraaf.com](http://www.vandergraaf.com)



# SSV Drum Motor Features & Options

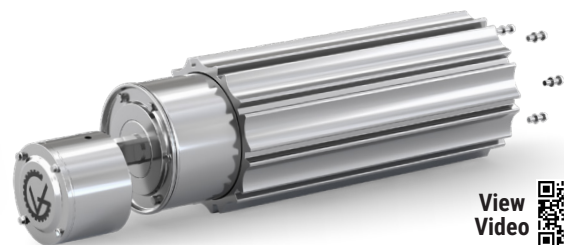
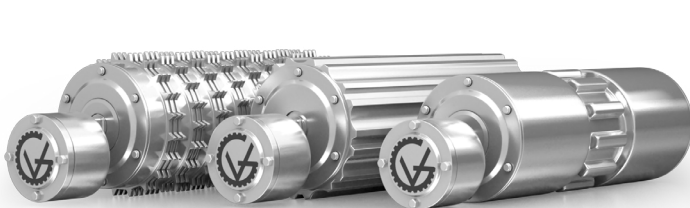


DIAMETER (inches)	HORSEPOWER RANGE (HP)	BELT SPEED (ft/min)	DRUM MOTOR (TM)
4.0	0.11 - 0.25	9 - 409	TM100B25
4.5	0.16 - 0.75	17 - 1039	TM113B25
5.0	0.25 - 1.5	5.8 - 316	TM127B30
5.4	0.25 - 1.5	6 - 343	TM138B30
6.5	0.75 - 3.0	43 - 272	TM160B40
8.5	2.0 - 7.5	44 - 1117	TM215B40
8.5	2.0 - 7.5	44 - 142	TM215B50

	STANDARD	OPTION
POWER CONNECTION	Junction Box	Cable; Straight or Elbow
ELECTRIC MOTOR*	Class H (180°C) VFD rated, Inverter-duty VPI	GV Thermal Overload Protection
VOLTAGE	480V 3 Phase	All non-standard voltage and frequency for 3 Phase applications
BACKSTOP	-	CW - Clockwise or CCW - Counter Clockwise
ELECTROMAGNETIC BRAKE	-	Available for TM127 and higher
LAGGING	-	USDA/FDA Food Grade Blue or White Nitrile Rubber; Plain, Diamond, or Chevron pattern
BELT PROFILES**	-	Available for various belt manufacturers, including Intralox, Wire Belt, Habasit, Gates, Cambridge, & Volta

\*All VDG premium-efficiency electric motors are manufactured in-house by VDG and undergo a **Vacuum Pressure Impregnation (VPI)** process, increasing the life of the electric motor.

\*\*SSV Drum Motors are available with the belt profile machined directly onto the drive drum, or the belt profile machined directly onto an exchangeable drive sleeve (XP). The SSV-XP Drum Motor drives a variety of modular belts by simply exchanging the sleeve to match the belt required on the conveyor without changing the drum motor. Contact VDG for more details.



1-888-326-1476 | info@vandergraaf.com | www.vandergraaf.com

