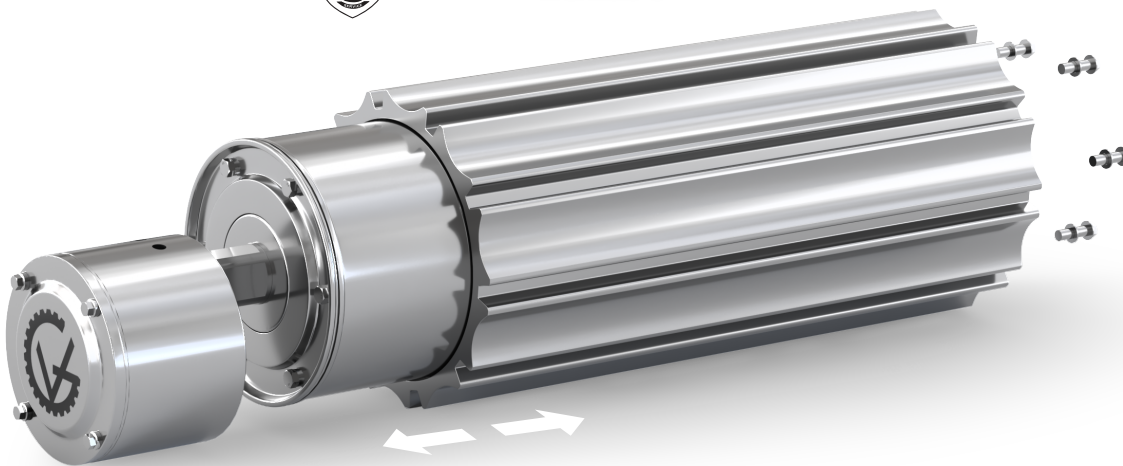
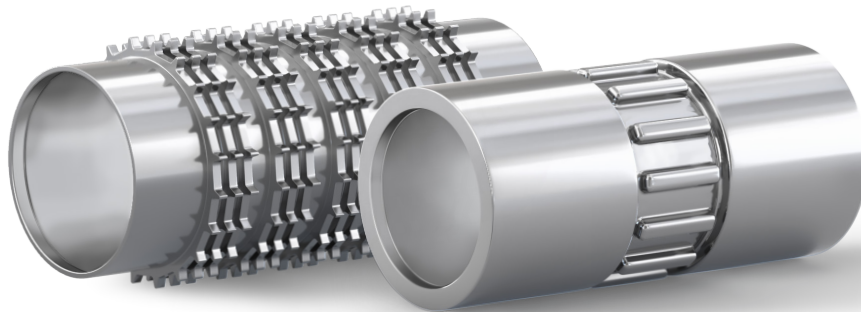


SSV Series: **NEW** SSV-XP Drum Motor



SSV Series Drum Motors drive modular, wire mesh, and monolithic thermoplastic conveyor belts without the use of sprockets. SSV Drum Motors are constructed of 316-stainless steel, feature an IP69K-rated sealing system, withstand pressure washdown up to 3,000 psi, and are designed for 80,000 hours of continuous operation before maintenance.

The SSV-XP Drum Motor is a new patented design that has the belt profile machined directly onto an exchangeable drive sleeve, which is easily removed and exchanged for another profiled sleeve to match the belt required on the conveyor without changing the drum motor. This offers the flexibility to use the same drum motor when switching to another belt for a different type of processing. Profiles are available for various belt manufacturers, including Intralox, Wire Belt, Habasit, Gates, Cambridge, and Volta.



- **NO DRIVE SPROCKETS**
- **IP69K SEALING SYSTEM**
- **WASHDOWN UP TO 3,000 PSI**



1-888-326-1476 | info@vandergraaf.com | www.vandergraaf.com

