



Logistics Industry

N O . I S 3 0 0 0



YONGLI --- Your Belting Solution Provider



Market Leader



High-Tech



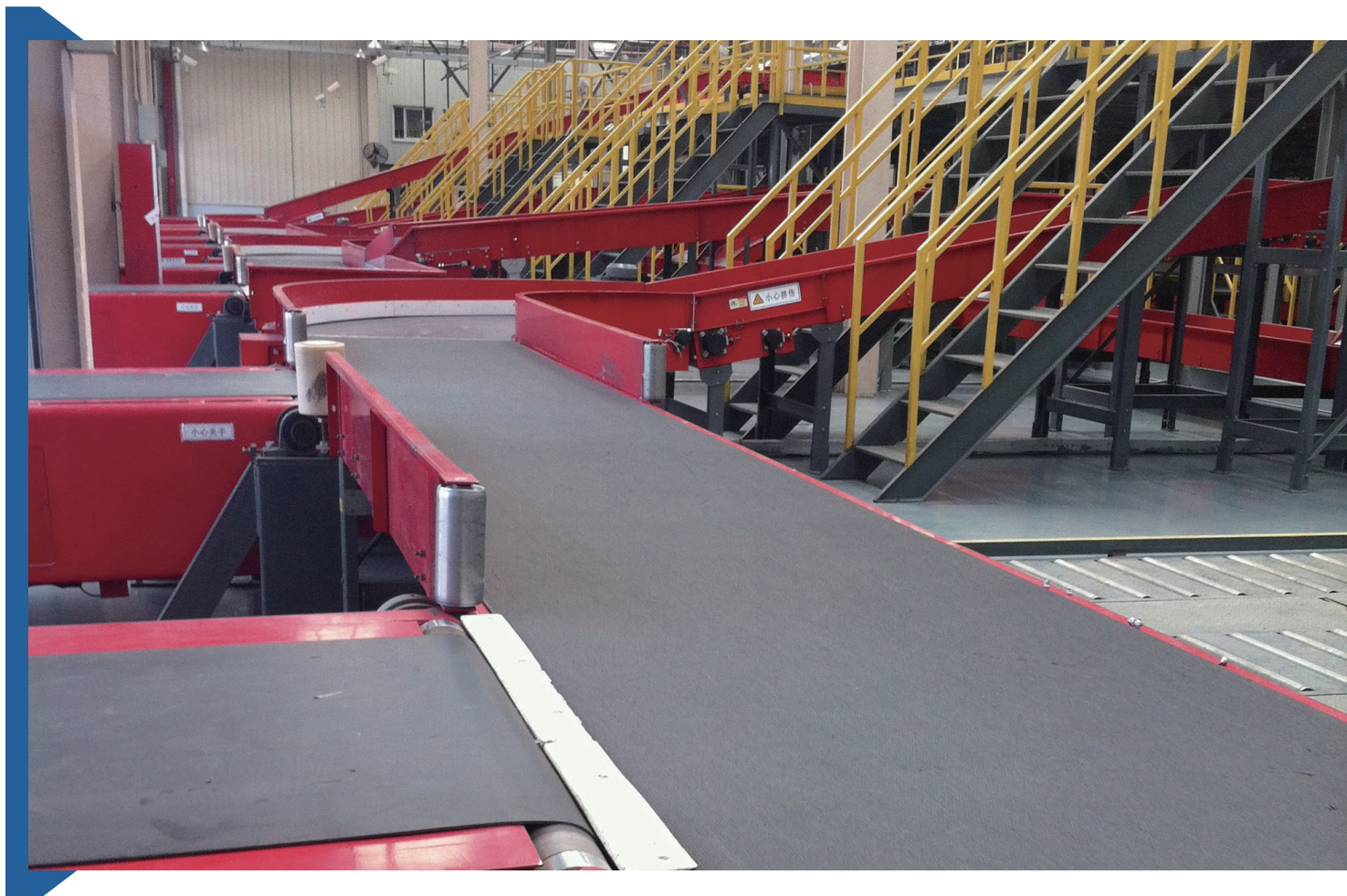
MPR Integration



Customization



24h Service



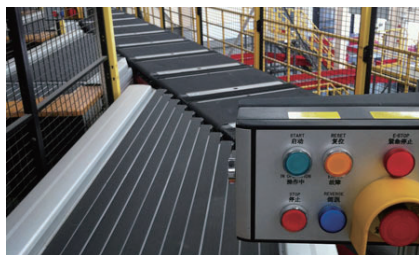
We have been concerned about the increasingly fast-paced, high-intensity and diversified needs of the logistics industry, fully understanding the performance and quality requirements of different types of conveyor belt products in different sections, and creating a complete solution for the entire section of the logistics conveyor belt. We lead the industry standard, take the lead in research and development of solid woven impregnation process products; and break through the traditional coating process, using Yongli' s advanced calendaring production line to develop and produce Polyurethane coating products, from raw material to final product, heat and pressure underneath in a fully enclosed state to ensure that the material properties of the product are not lost.

At the same time, we rely on years of accumulated field experience, maintenance data analysis, and professional and flexible service concepts, to select the right product selection concept for customers, and to provide customized and processing services to meet the diverse needs of customers.

The PVK belt developed by Yongli not only meets the functional requirements of different sections, but also uses a solid woven structure reinforced fabric. The physical properties such as extension and tensile strength of the finished product are superior to those of the conventional PVC impregnated belt. The impregnation process prevents the conveyor belt from delaminating due to long use time and prolongs the service life of the belt. Have stronger market competitiveness.

Strong stability

In the conveyor belt of automatic equipment, not only the PU special design single-layer has been developed in the joint line, which effectively solves the phenomenon of deviation or tooting caused by high-speed, sharp-turn emergency stop, etc., and also develops a has been idle for a long time and the precipitation of PVC after high temperature causes the item to slip!



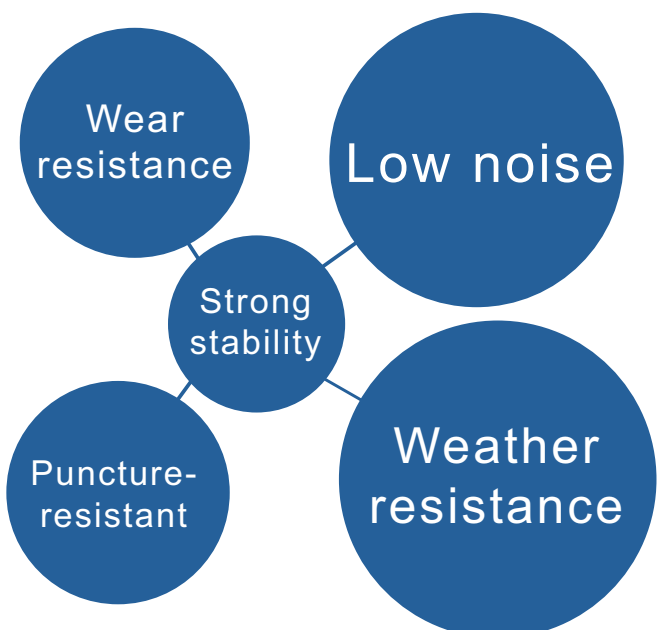
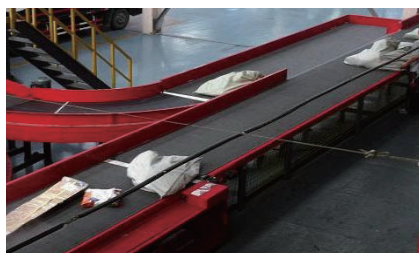
Wear resistance and impact resistance

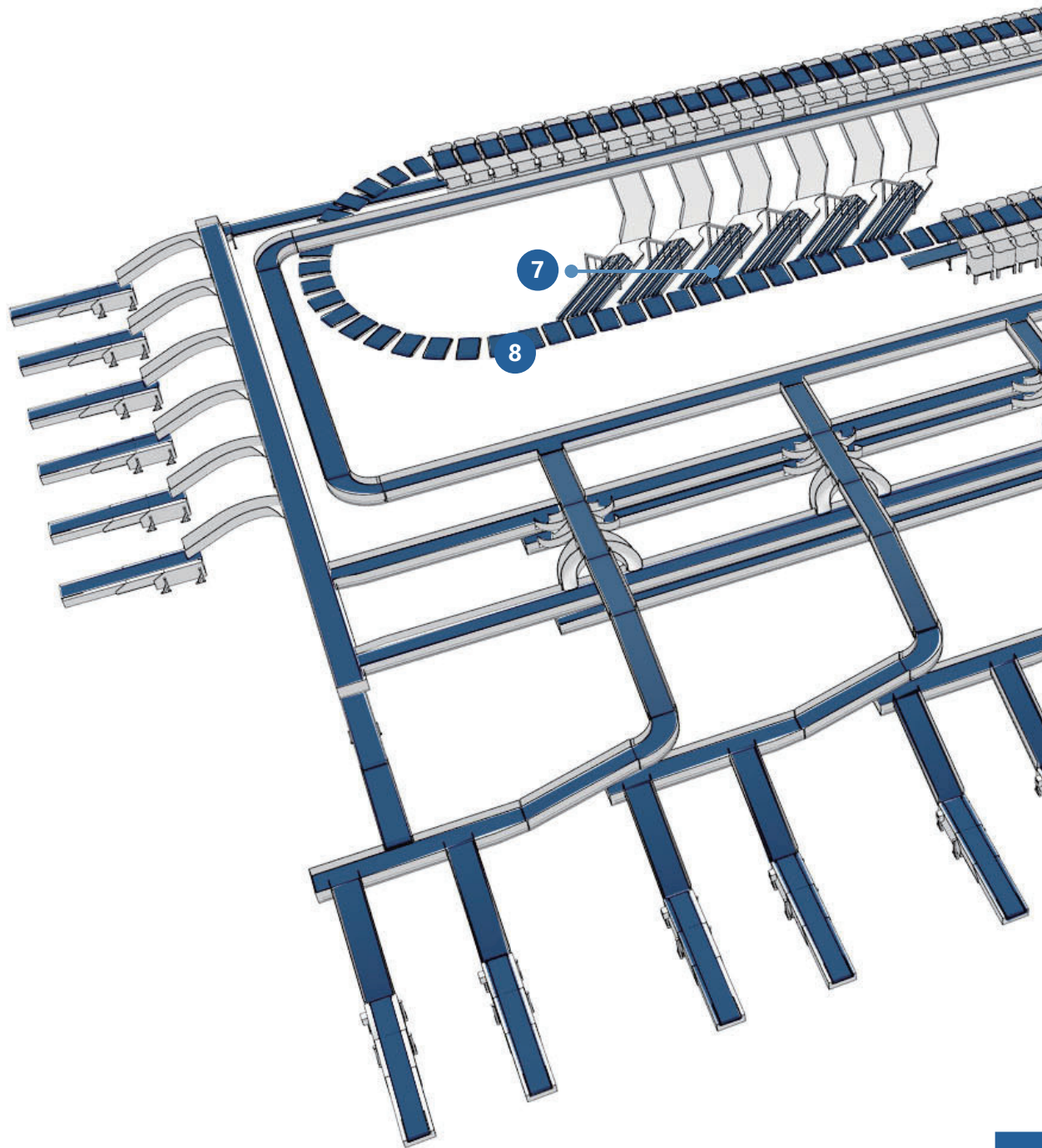
The PVK impregnation process is different from the traditional coating process, so that the slurry can be fully infiltrated into the fabric layer through the multi-channel extrusion of the equipment to increase the strength of the belt. In the case of large parts, it can be upgraded to PU impregnated. Impact resistance can be double guarantee when PU coating internally at the solid woven fabric

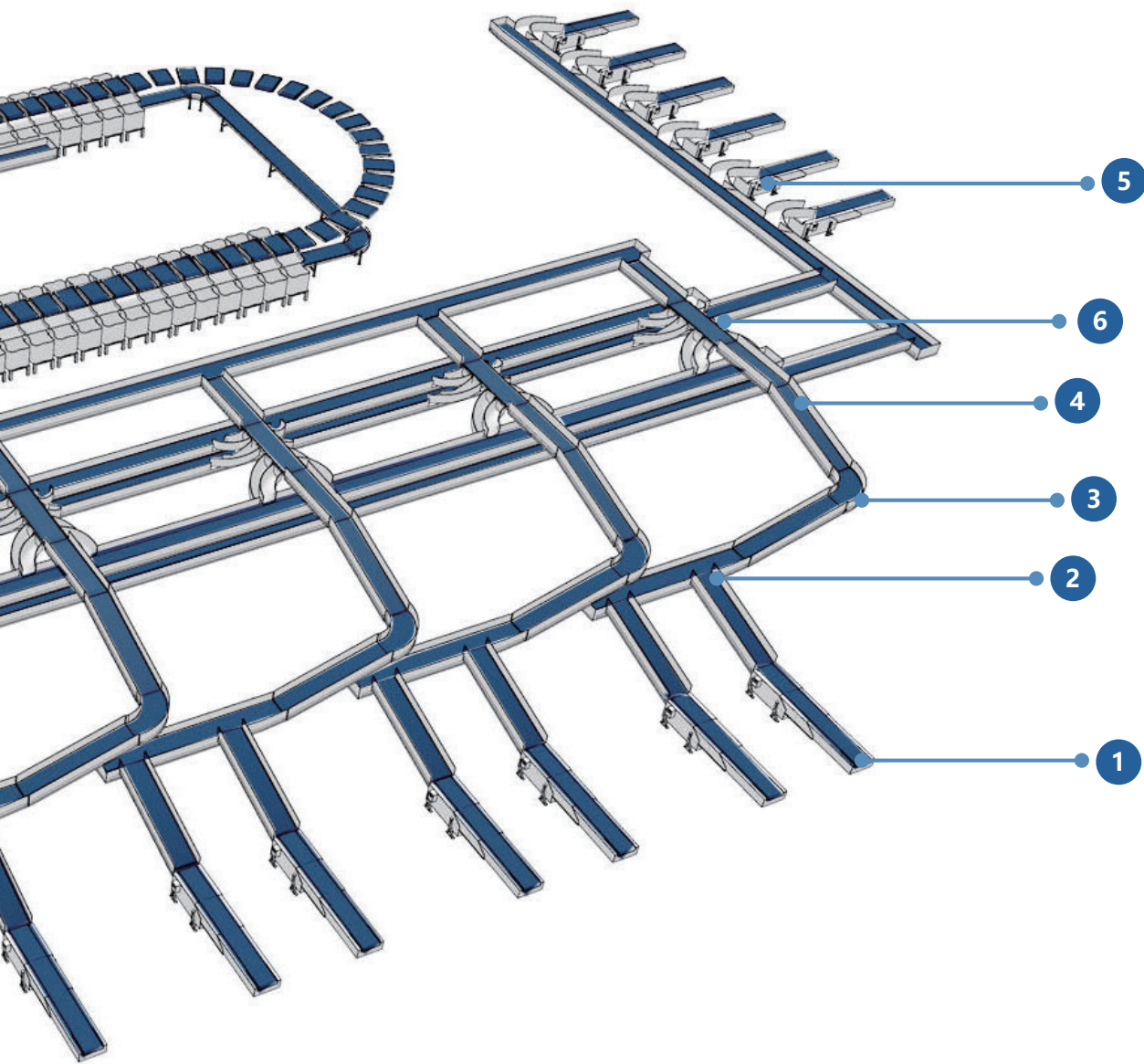


Low noise

By changing the material and weaving method of the underlying fabric by different surface materials to effectively solve the problem of noise increase, for certain high-speed sections, Wynn has obtained a high recognition degree after it is customized!

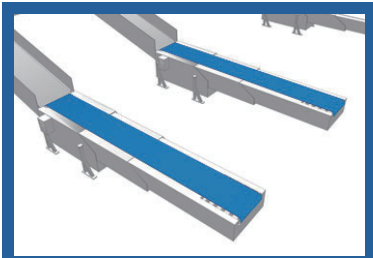






- 1 Entry and exit telescopic belt
- 2 Entrance merger and -belt
- 3 Curve conveyor belt
- 4 Inclined conveyor belt

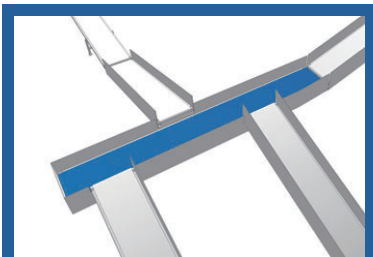
- 5 Push sorter belt
- 6 Merger belt below the chute
- 7 Induction/Merger conveying
- 8 Cross sorter belt



Telescopic belt

Telescopic belt:

Using general PVK belt, the belt is puncture resistant, reducing surface damage and prolonging life, and can be applied to multi-curved models.

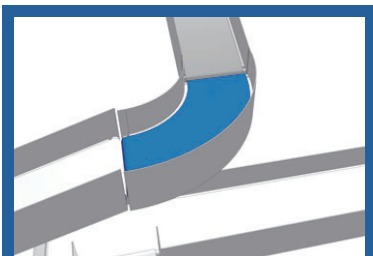


Entrance merger and straight section belt

Entrance merger and straight section belt:

In order to improve the energy-saving needs of the whole field, it is recommended to use PU or felt here, which can be satisfied by the characteristics of self-weight and changing the layer structure under the premise of ensuring the strength of the belt!

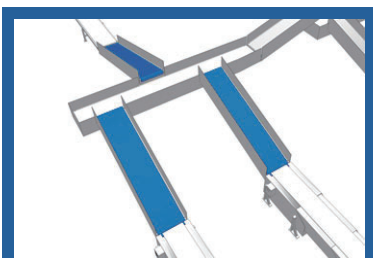
6



Curve conveyor belt

Curve conveyor belt:

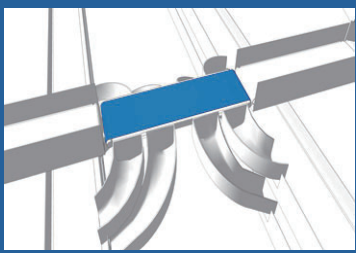
Conventional is a common PVC belt, and a new PU material belt is recommended, which is more resistant to bending and has a longer life.



Inclined conveyor belt

Inclined conveyor belt:

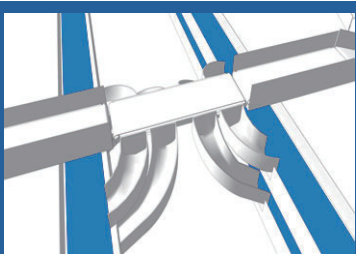
PVC straight stripe belt is suitable for large parcels such as e-commerce carton parcel, express delivery and logistics. We recommend PVK No.9 pattern(Longitudinal rib) to effectively solve the problem of insufficient belt length.



Push sorter belt

Push sorter belt:

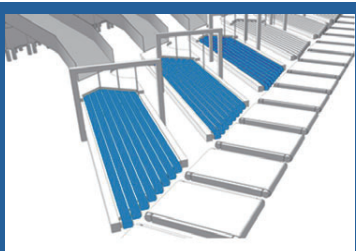
U32-34/OPD meets the requirements of the field, and the surface is smooth and smooth, compared with the ordinary rubber PVC belt, reducing the adsorption of the package. At the same time consider saving labor, you can consider the modular mesh belt.



Merger belt below the chute

Merger belt below the chute:

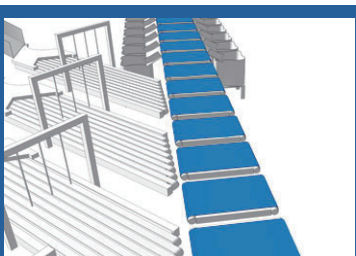
U125-34/33, to meet the use of the site, the current on-site items are more and more diversified, under this premise, we developed PU impregnated, add PU coating on the original PVK, increase the belt's resistance of impact and puncture resistance Effective protection of the baseband reduces damage.



Induction/Merger conveying

Induction/Merger conveying:

Longitudinal rib, we especially recommend the use of PU conveyor belt, to improve overall stability and surface wear resistance, longer life.



Cross sorter belt

Cross sorter:

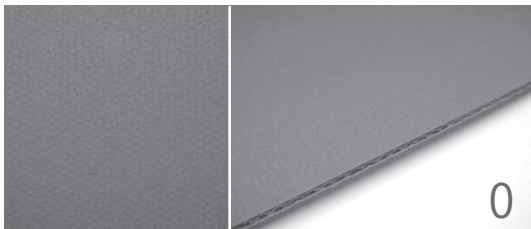
For diamond belts, we especially recommend the use of PVC belts with hybrid elastomers to restart the belt without deformation after a long period of downtime.

Product Code	Type	Color	Surface	Material	Thickness	Tension for 1% elongation	Minimum diameter pulley	Temperature	Application
					mm	N/mm	N/mm	°C	
122306	P25-44/1RBZA	Gray(4015)	Diamond	PVC	2.0	6	20	-20/+60	Induction/Merger conveying, cross sorter
102035	S18/1Z	Black	Diamond	PVC	2.0	6	40	-15/+80	Induction/Merger conveying, cross sorter
122032	P25-34/19RD	Black	Longitudinal rib	PVC	2.4	10	50	-20/+60	Inclined conveying, induction/Merger conveying
122433	P21-34/0H	Black	Matt	PVC	2.5	12	40	-15/+80	Curve conveyor belt
122472	P21-34/48LZA	Black	Mini grip fabric	PVC	2.8	12	40	-30/+80	Curve conveyor belt, low temperature resistance, high friction
122198	P25-35/0D	Black	Matt	PVC	3.0	12	60	-15/+80	General conveying belt
122112	P22-36/19RD	Black	Longitudinal rib	PVC	3.1	12	60	-20/+60	Inclined conveying belt
122660	P22-36/54LRDA	Black	Wavy super nipple	PVC	4.0	10	50	-30/+60	Inclined conveying belt
122176	P22-36/9D	Black	Mini grip fabric	PVC	5.3	12	60	-20/+60	Inclined conveying belt
S10287	P20-37DAI	Black	Impergnated fabric	Impregnated belt	3.5	15	60	-15/+80	Telescopic belt
104002	P100-37	Black	Impergnated fabric	Impregnated belt	3.0	14	60	-10/+80	Inclined conveying belt, puncture-resistant, impact resistance
104056	P120-36/19i	Black	Longitudinal rib	Impregnated belt	3.5	21	80	-15/+80	Inclined conveying belt, puncture-resistant
104004	P125-37	Black	Impergnated fabric	Impregnated belt	3.5	21	80	-10/+80	Inclined conveying belt, puncture-resistant, impact resistance
S10290	U125-34/33	Black	Rough matt	Impregnated belt	3.5	21	80	-10/+80	Merger belt below the chute, puncture-resistant, impact resistance
104001	P150-37	Black	Impergnated fabric	Impregnated belt	4.0	25	100	-10/+80	General conveying belt, puncture-resistant, impact resistance
103012	M100-37	Black	Impergnated fabric	Felt belt	3.5	12	70	-20/+80	Merger belt below the chute, puncture-resistant, impact resistance
301036	U22-34/33PDA	Black	Rough matt	TPU	2.6	14	70	-20/+80	General conveying belt, scratch resistance
S10470	U32-34/0PD	Black	Matt	TPU	3.3	18	80	-15/+80	Smooth surface
300041	U2-3/19RDA	Black	Longitudinal rib	TPU	2.2	12	30	-20/+80	Induction/Merger conveying, weigher
105002	UU11(26-0)-N	Black	Matt/fabric	Elastic belt	1.1	8	10	-20/+60	Roller line, anti-meandering

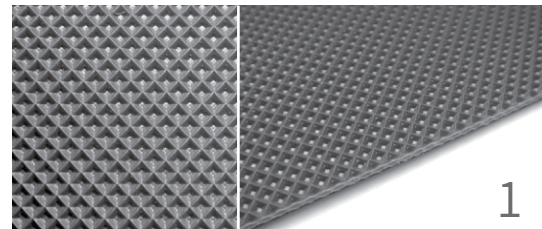
All data are measured in a standard environment (temperature 23°C±2°C, relative humidity 50%±5%, in accordance with ISO 554), data reliability comes from Yongli' s small analog equipment and years of application experience due to application environmental deviations such as temperature, humidity and various chemical mixtures, The chemical resistance of the material changes. We strongly recommend that you observe and test our different materials in the actual environment in which you work. We cannot provide guarantees and promises for individual cases, but we are happy to provide you with advice on how to use them, as well as samples for you and test information. For details, please contact sales which authorized by Yongli.

Profiles

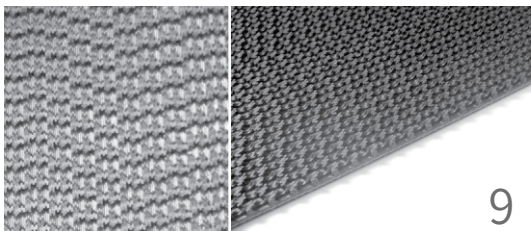
Based on years of experience in the production and application of conveyor belts, Yongli has developed more than 80 patterns to fully meet the different user environment requirements. A variety of standard patterns can be applied to conveyor belts of different materials. However, due to changes in materials, hardness, conveying environment, and weight of articles, the conveying capacity of the same pattern will be different. If the user has a request, we also provide a customized service, please contact the sales staff.



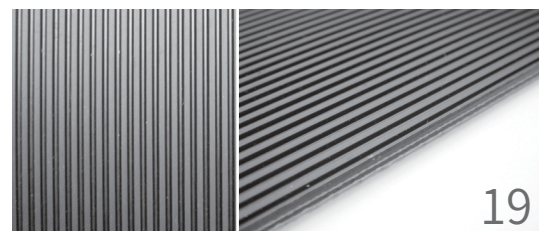
Name: Matt Code: 0
 Thickness: - Width: 3000mm
 Property: Non adhesive surface
 Application: General conveying belt



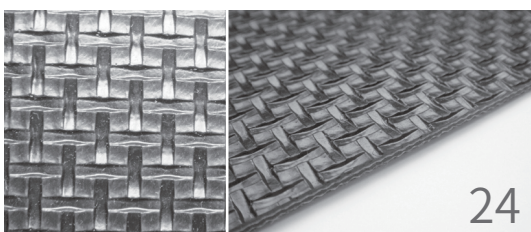
Name: Diamond 2mm Code: 1
 Thickness: 0.6mm Width: 3000mm
 Property: Non adhesive surface
 Application: Food,logistic industry



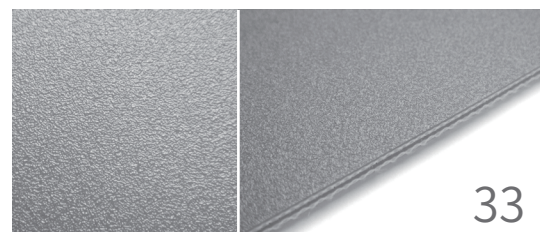
Name: Wavy rough top Code: 9
 Thickness: 2.4mm Width: 3000mm
 Property: High surface friction,inclined conveying
 Application: Logistic,airport industry



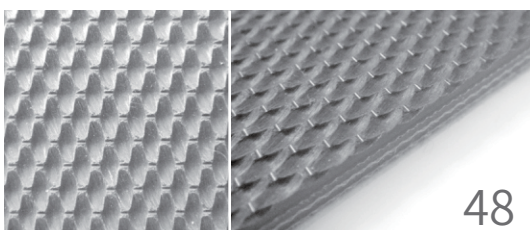
Name: Longitudinal rib Code: 19
 Thickness: 0.7mm Width: 3000mm
 Property: Easy to clean,inclined conveying
 Application: Logistic,airport,packaging industry



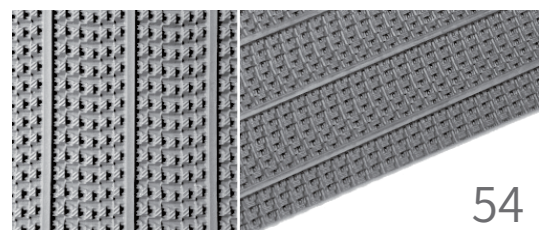
Name:Lattice Code: 24
 Thickness: 0.5mm Width :3000mm
 Property: Surface friction,inclined conveying
 Application: Airport,logistic,non-woven fabrics



Name: Rough Code: 3
 Thickness: 0.1mm Width: 3000mm
 Property :Non adhesive surface
 Application: Logistic,packaging industry



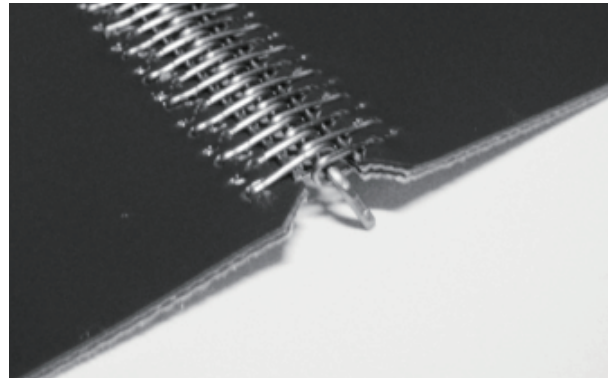
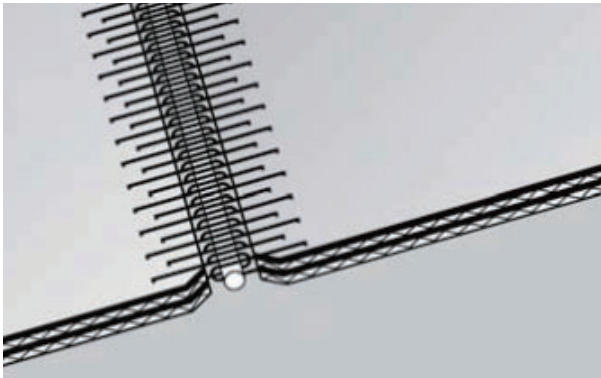
Name: Mini grip fabric Code: 48
 Thickness: 0.8mm Width: 3200mm
 Property: Surface cut-resistant
 Application: Metalwork industry



Name: Longitudinal super grip Code: 54
 Thickness: 1.2mm Width: 2000mm
 property: -
 Application: Logistic,treadmill industry

Joint method:

All conveyor belts must be joint in a endless to be used, so the quality of the conveyor belt joints directly affects the service life of the conveyor belt and the conveyor line.
Can run smoothly and steady.

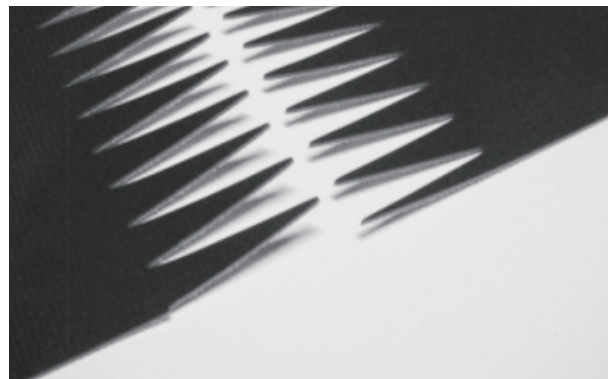
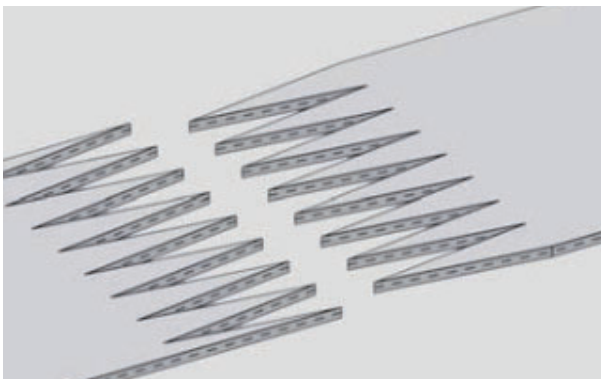


Steel Fastener:

The steel buckle joint is a simple, common joint method.

Advantages: easy to operate, high strength, suitable for replacement of spare parts at distribution outlets;

Disadvantages: The steel buckle has a certain frictional damage to the mechanical roller and is not suitable for the transportation with high stability requirements.



Hot press finger joint:

Hot press joint is a technically demanding joint method.

Advantages: high joint stability, almost integrated with the belt;

Disadvantages: The joint process is complicated.

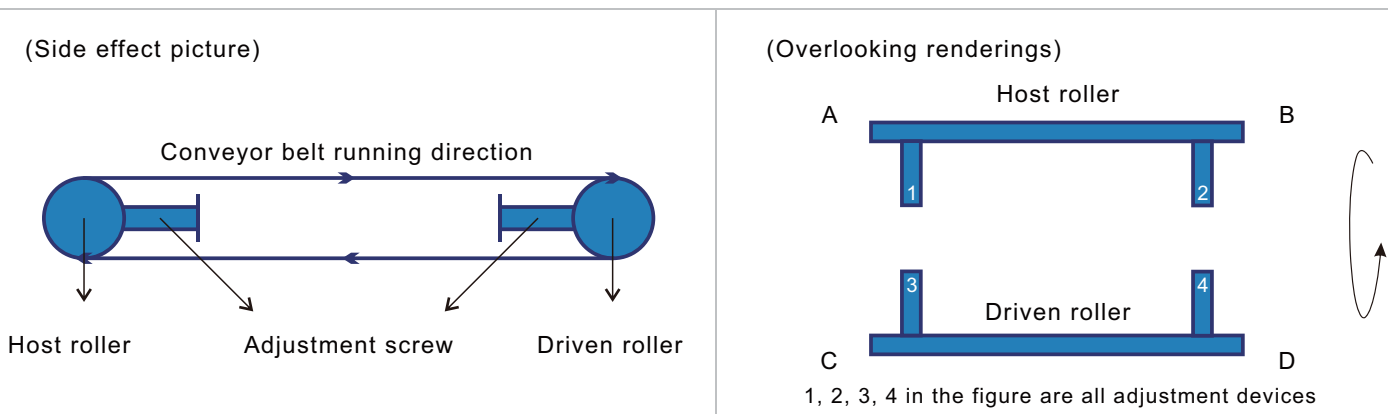
★ Automatic sorting system conveyor belt must be hot-pressed

Maintenance of equipment and conveyor belts

Maintenance of equipment and conveyor belts:

Conveyor belt debugging is a very important part. The adjustment result directly affects whether the equipment can operate normally and the service life of the conveyor belt. Without effective debugging, the conveyor belt may be one way deflected, the left and right swings greatly, and the conveyor belt S type running or diagonal running, etc., all of which will directly lead to the cracking of the conveyor interface until the disconnection, and the unilateral wear of the conveyor belt is serious. If it is a steel buckle interface, it will be more serious, and the edge of the steel buckle interface will fall off, so that the conveyor belt. The use cycle and the reduced operational effect are all due to the fact that the conveyor belt is not in place. It's much important for conveyor belt test.

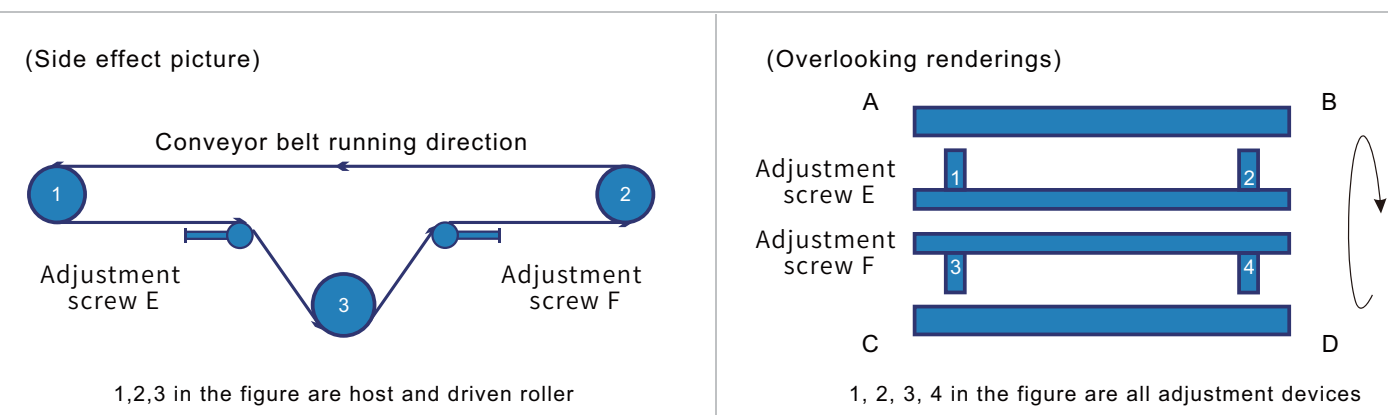
Equipment structure type. Step 1:



If the conveyor belt is running on one side of the A side as a whole, the tension adjustment is 1 or 3
 The conveyor belt is running on one side of the B end as a whole, and the tension adjustment is 2 or 4

Conveyor belt running diagonally:
 ① Run to AD, tension adjustment 1 and 4
 ② Run to BC, tension adjustment 2 and 3

Equipment structure type. Step.2:



With the line of the device as the reference edge, all angles and F are locked at an angle of 90°. Adjustable 3 and 4 when the conveyor belt meandering over a wide range

If the conveyor belt is running on one side of the A side as a whole, the tension adjustment is 1
 The conveyor belt is running on one side of the B end as a whole, and the tension adjustment is 2

Conveyor belt running diagonally:
 ① Run to AD, tension adjustment 1
 ② Run to BC, tension adjustment 2
 Adjustable 3 and 4 when the conveyor belt runs over a wide range



Shanghai YongLi Belting Co.,LTD

Add: Unit 502-503, Building A, Hongqiao Vantone Center,
333 Suhong Road, Minhang District, Shanghai, China

Tel: +86-21-5988 3585

Fax: +86-21-6316 0709

Web: www.yonglibelt.com

Domestic Branch

Guangdong Branch

Tel: 0757 - 8629 0776

Tianjing Office

Tel: 022 - 2775 2490

Nanning Office

Tel: 0771-5716 476

Qingdao Branch

Tel: 0532 - 8565 7572

Shenyang Office

Tel: 024 - 2291 6018

Wuhan Office

Tel: 027 - 8422 6061

Fujian Branch

Tel: 0592 - 5564 555

Chengdu Office

Tel: 028 - 8444 0592

Hefei Office

Tel : 0551-6349 1132

Kunming Office

Tel:0871 - 6561 0319

Shenzhen Office

Tel:0755 - 2350 3696

Foreign Branch

YongLi Europe

Tel:+31-226-399-928

YongLi Germany

Tel:+31-475-53-5700

YongLi America

Tel:+1-219-763-7920

YongLi Austria

Tel:+43-662-876030

YongLi Korea

Tel:+82-31-953-4062

YongLi Poland

Tel:+48-523-954-460

YongLi Indonesia

Tel:+62-21-22652866-68

YongLi Japan

Tel:+81-03-6880-9201